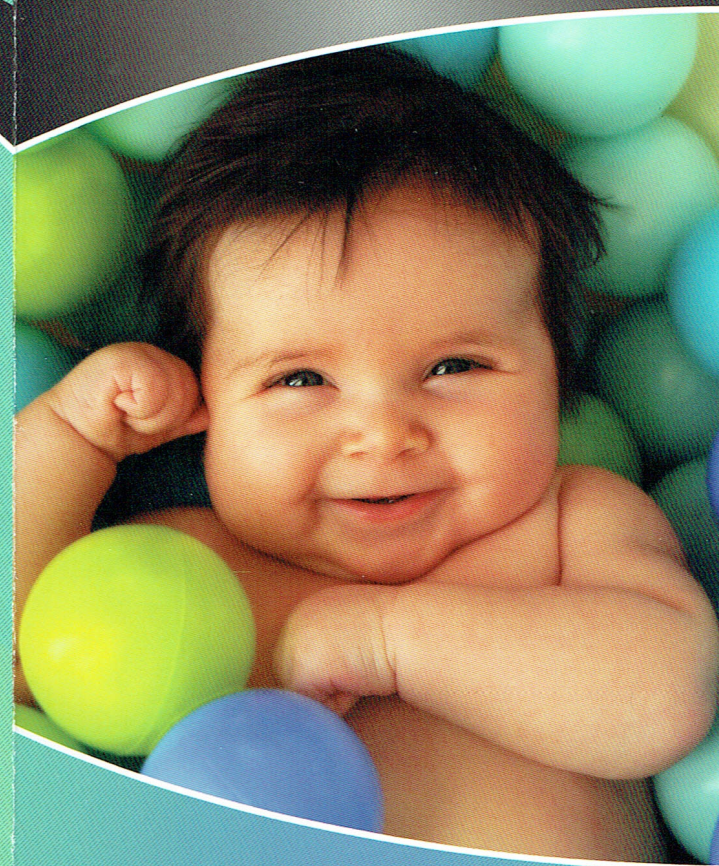


Ask us about LightScalpel  
laser frenectomy!



## INFANT LASER FRENECTOMY



### What is a LightScalpel CO<sub>2</sub> laser?

The LightScalpel CO<sub>2</sub> laser is a device that produces a concentrated beam of light. The highly focused CO<sub>2</sub> laser beam vaporizes cleanly and precisely while sealing blood vessels at the same time. Many years of experience in medicine and oral surgery went into the design of this laser system, which was made to provide superior care for patients.

Our laser is so precise that we can selectively remove only a few cells at a time, if needed. At the same time, it is powerful enough to de-bulk large tumors.

### Are LightScalpel laser procedures safe?

When used according to accepted guidelines by a trained practitioner, the laser is as safe as other instruments. You will wear special protective glasses, just as you would to protect your eyes from sun exposure.



Find out more at  
[LightScalpel.com](http://LightScalpel.com)



Our office utilizes the latest CO<sub>2</sub> laser technology from LightScalpel. This brochure will help you better understand our laser.

## LightScalpel Laser Frenectomies

### Lip Tie Release (Labial Frenectomy)



Before

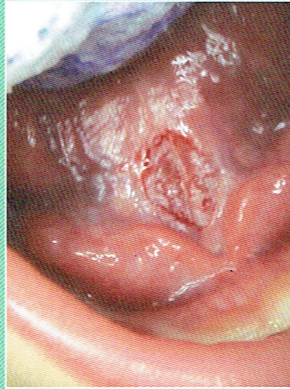


3 Weeks After

### Tongue Tie Release (Lingual Frenectomy)

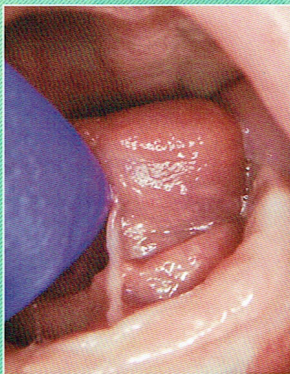


Before



Immediately After

### Lingual Frenectomy



Before



5 Days After  
(Note: healing coagulum patch)

Clinical images are courtesy of Martin Kaplan, DMD, Dipl. ABL.S., Director of Dental Laser Surgery for ABL.S.

## What are the advantages of LightScalpel laser frenectomies?

- **Minimized Bleeding:** As it vaporizes the tissue, the LightScalpel laser seals small blood vessels. The resulting reduction in bleeding makes frenectomy a quick and easy procedure. In most cases, no sutures are required.
- **Less Swelling and Discomfort:** The LightScalpel CO<sub>2</sub> laser beam seals lymphatics, resulting in less post-operative swelling and discomfort associated with traditional scalpel procedures.
- **Reduced Risk of Infection:** The sanitizing effect of the laser minimizes the risk of infection and means faster healing.
- **Shortened Procedure Time:** Less bleeding ensures the improved visibility of the treatment area. This helps to minimize the duration of the procedure.
- **Faster recovery:** Reduced trauma, minimal to no bleeding, and less swelling and discomfort mean the infant can breastfeed immediately after the procedure.
- **Advanced laser tools mean better results:** The lightweight ergonomic handpieces and flexible fiber waveguide of the LightScalpel CO<sub>2</sub> laser allow for enhanced precision with pin-point accuracy and excellent reach.

## Experts on CO<sub>2</sub> laser dentistry:



“As a pediatric dentist with 15 years of laser experience, including diode and erbium classes of lasers, I now exclusively use the LightScalpel CO<sub>2</sub> laser for every infant soft tissue surgery. The adjustments for various tissue types and the exact precision of ablation are unparalleled. No other laser allows for this fine surgical control. I would never treat a patient with any other laser.”

*Martin A. Kaplan, DMD  
Stoughton, MA*

“The laser enables us to achieve some really dramatic results for soft tissue. By sealing blood vessels, lymphatic vessels and nerve endings, my laser enables me to operate with a dry surgical field; meanwhile, the clinical benefits of reduced pain, minimal bleeding and faster recovery for my patients cannot be stressed enough... the CO<sub>2</sub> wavelength is far superior for the soft-tissue surgeries I'm doing.”

*Mark Docktor, DDS  
Hoboken, NJ*



“The CO<sub>2</sub> laser wavelength is the most efficient wavelength for soft tissue laser dentistry due to its unparalleled absorption by oral soft tissue.”

*Robert A. Convissar, DDS  
New York, NY*